

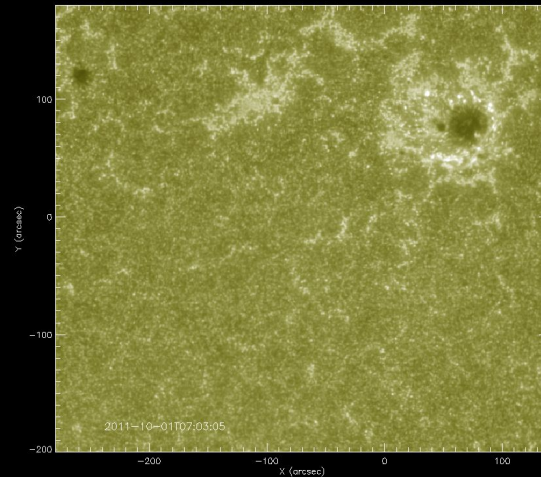
Week 4 Update

Zoe Schlossnagle with Dr. Chunming Zhu

Background & Last Update Recap

- Modeling precursor events by analyzing data from SDO

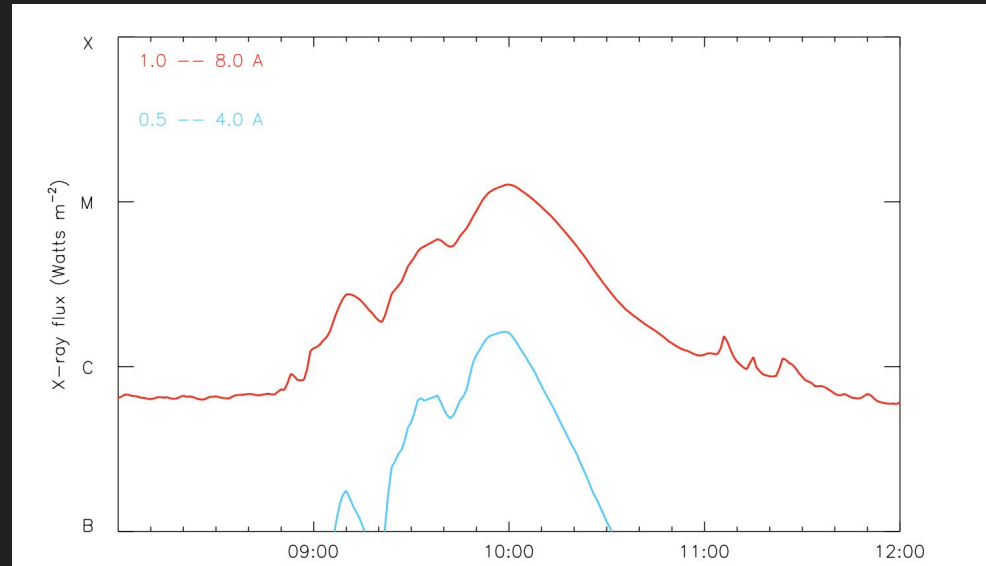
AIA 1600 map of October 1, 2011 event



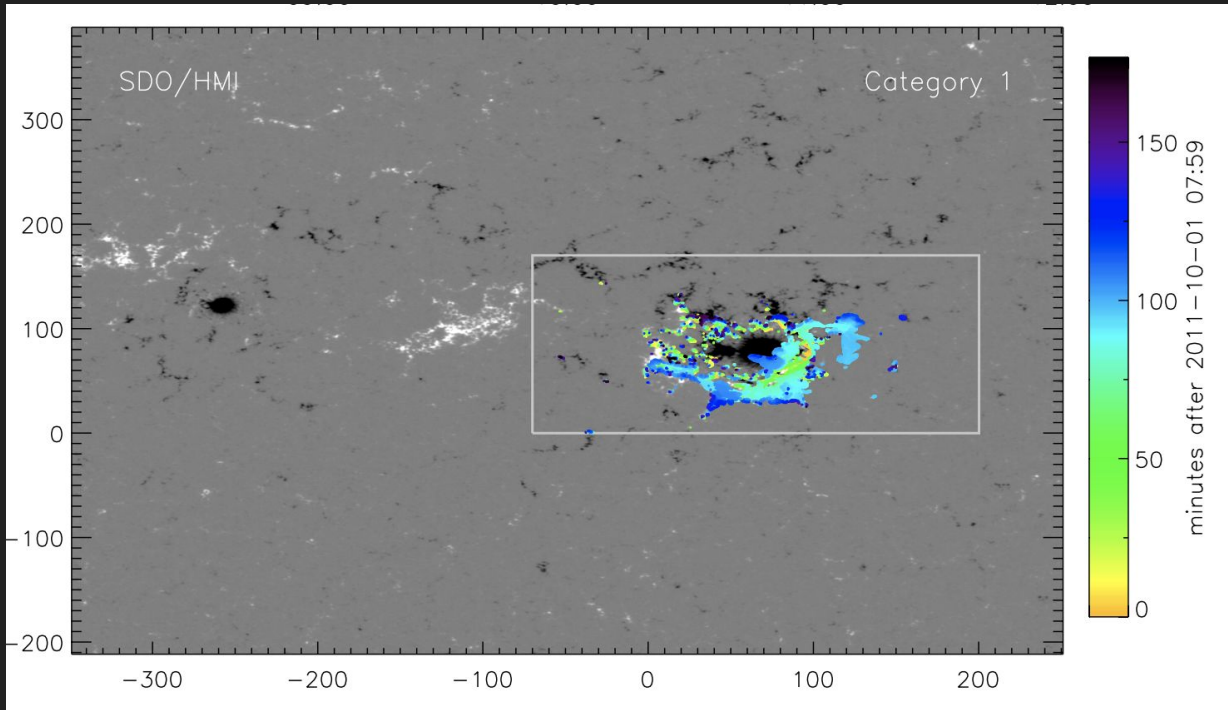
Week 3

- Using Dr. Qiu's magnetic flux modeling programs and the CME light curve plotting programs to generate plots of the events

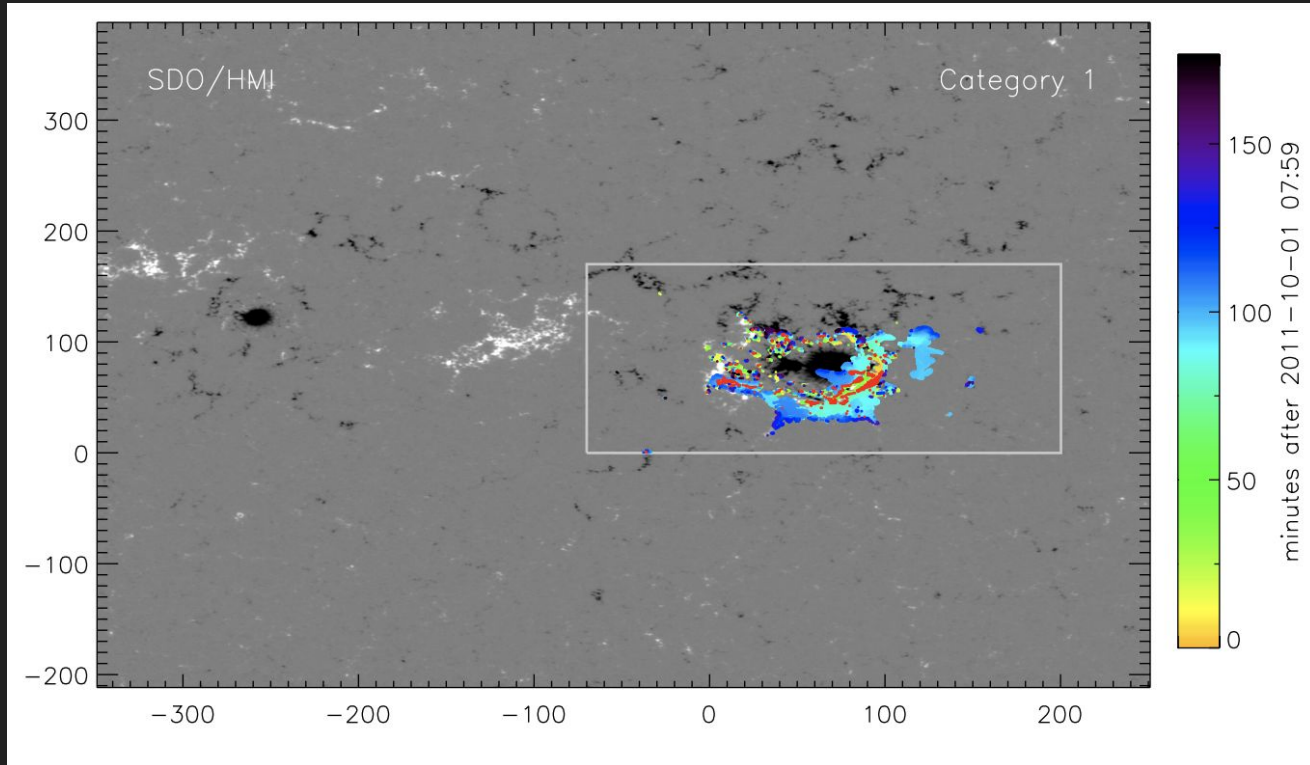
Plot of X-ray Flux against Time



Time plot (lat/long) of 2011/10/01



Adding in the earliest flaring pixels in red



This week

- Modeling magnetic field extrapolation and geometry
 - running HMI map generation programs for the 2011/10/01 data from last week
 - prepped and ran the extrapolation on resulting magnetic field maps

Data Viewer

Yellowstone!!!

